

# **SinhalaTamil Kit User Guide**

For  
Windows XP

# Contents

1. How to install SinhalaTamil Kit
2. How to uninstall SinhalaTamil Kit
3. Typing problems
4. Settings to enable typing in Type Check Sequence Mode

## *Installing SinhalaTamil Kit*

Welcome to the SinhalaTamil Kit installation Guide. This guide will help you step by step to install SinhalaTamil Kit for Windows XP.

Download the SinhalaTamil Kit installation file or copy the installation file. The name of the installation file is SinhalaTamilKit\_XP.exe  
(Size 15.8 MB)

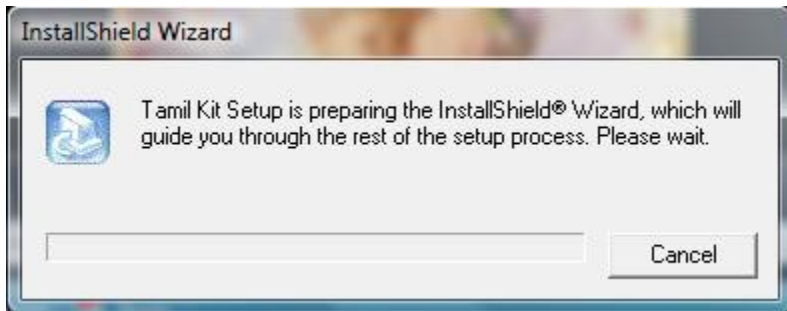


SinhalaTamilKit\_XP.exe

Make sure you log in as the Administrator of the computer.

Double Click on the file to start the installation process.

The setup starts with the following screen.



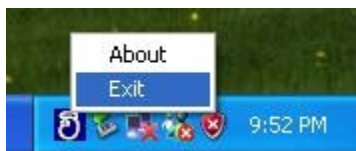
Press "Yes" if you would like to install the SinhalaTamil Kit



If you have installed the older version of Sinhala Kit, please uninstall.

Left click on the Sinhala Kit icon in the System Tray and click exit.

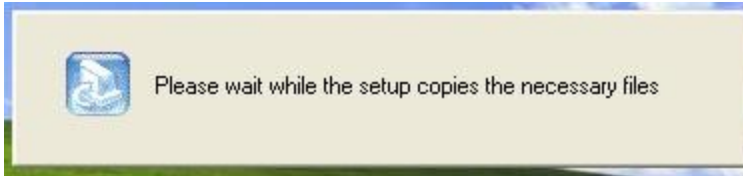
Then Select start -> All Programs -> Sinhala Kit -> Uninstall



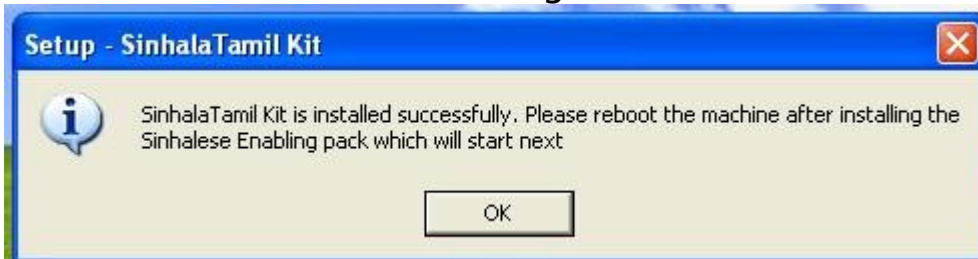
Follow the instructions carefully.



Please wait till the setup copies the necessary files.  
Will take few seconds to copy the files



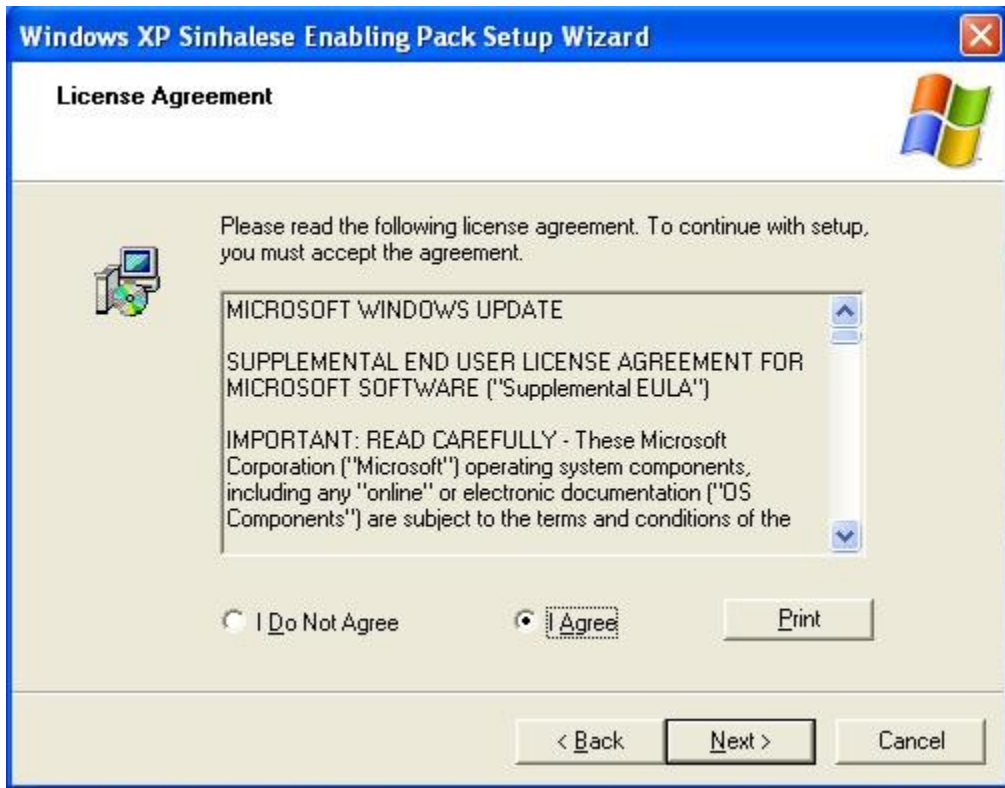
SinhalaTamil Kit is installed successfully. The setup will then invoke the Sinhalese Enabling Pack.



Welcome screen of Sinhalese Enabling Pack



Check "I Agree" option and press next



Sinhalese Enabling Pack starts copying the necessary files





Press "Finish" and reboot the machine.

The SinhalaTamil Kit application will be loaded automatically after you restart the machine.





Once the application is loaded, you will see the SinhalaTamil Kit icon in the System Tray.



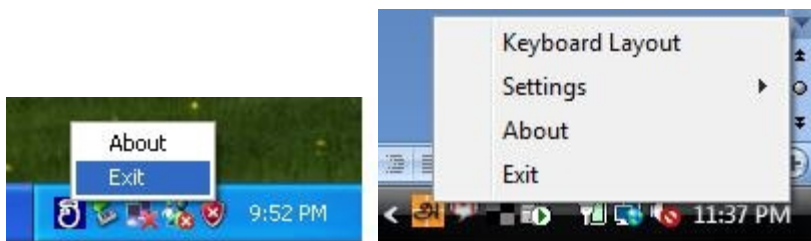
To actually use the SinhalaTamil Unicode, select the application you wish to type (make sure the application is Unicode enabled) and then select the keyboard layout. You will see the language bar on the desktop or on the System tray. Select the Sinhala or Tamil keyboard and start typing.



## *Uninstalling SinhalaTamil Kit*

Before you uninstall please make sure you exit or close the Sinhala Tamil Kit application.

In the system tray left click the Sinhala Tamil Kit icon and click on the Exit menu option.



Select start -> All Programs -> SinhalaTamil Kit -> Uninstall



Press "Yes" to uninstall SinhalaTamil Kit



SinhalaTamil Kit will be uninstalled in few seconds



## *Typing Problems*

In Office Word 2003, by default "Use sequence checking" option is disabled.

If the type checks sequence is enabled then you won't be able to type the key sequence properly.

### **How to disable type check sequence**

Open Office Word 2003

In the main menu click Tools -> Options.

An option window will open, click the Complex Script Tab

There you will find a check box "Use sequence checking".  
Uncheck this option.

In Office Word 2007, by default the Use sequence checking is disabled.

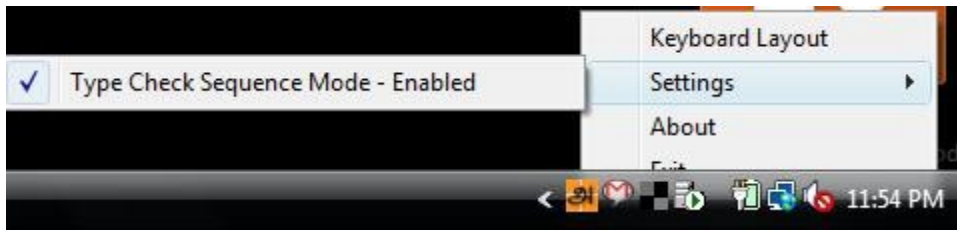
If it is enabled then you can disable by right clicking on one of the menu item. You will see "Customize Quick Access Toolbar", click on that sub menu. Word options window will open; there you can see the Advanced Tabs on to the right side of the window.

Click on that option, under Editing options you will find the Use sequence checking check box, uncheck that and restart the Word application .

## *Settings to enable typing in Type Check Sequence Mode*

In some office application, you won't be able to disable the type check sequence; in that case you can enable the Type check Sequence Mode from the driver.

How to switch Type Check Sequence Mode



Left click on the Tamil Kit icon on the system tray and click the settings option and enable or disable Type Check Sequence Mode

In Type Check Sequence Enabled mode, vowel modifier appears only after a consonant. The typing sequence is the same but the vowel modifier which precedes the consonant will not be visible.

The vowel modifier will be visible only after you type the consonant.

In Tamil there are 3 vowel modifiers which precede the consonant.

(single kombu - e modifier, double kombu - ee modifier and ai modifier)

Use this mode only when you have problems in typing.